

# flame

© Discreet Logic Inc., 1992-2000. All Rights Reserved.

This documentation contains proprietary information of Discreet Logic Inc. and its affiliates. No part of this documentation may be reproduced, stored in a retrieval system, or transmitted in any form or by any means, electronic, mechanical, recording or otherwise, without the prior written permission of Discreet Logic.

The End-User Software License Agreement which is included with the software program and this manual specifies the permitted and prohibited uses of the software program. Please read the terms and conditions of the Agreement before commencing use of the software program.

The information in this documentation was prepared by Discreet Logic with all reasonable care and is believed to be accurate. However, Discreet Logic and its affiliates shall not assume responsibility for losses or damages resulting from any omissions, inaccuracies, or errors contained herein. This documentation is subject to change, and revisions or new editions may be issued to incorporate such changes.

RESTRICTED RIGHTS LEGEND: The Software {and Documentation} is provided with RESTRICTED RIGHTS. Use, duplication or disclosure by the United States Government or any agency, department or instrumentality thereof is subject to the restrictions set forth in the Commercial Computer Software — Restricted Rights clause at FAR 52.227-19 or the Commercial Computer Software — Licensing clause at NASA FAR Supplement 1852.227-86, as applicable, or in successor provisions, including the limitations set forth in the End-User Software License Agreement included with the software program and this manual. Manufacturer is Discreet Logic Inc., 10 Duke Street, Montreal, Quebec, Canada, H3C 2L7.

**fire, flame, flint, inferno, smoke, and wire** are registered trademarks and **Discreet** is a trademark of Autodesk Inc./Discreet Logic Inc. in the USA and/or other countries. All other brand or product names are trademarks or registered trademarks of their respective owners.

Printed in Canada.

Title: **flame** Troubleshooting Charts

Part No. 900-70253

Date: July 2000

# charts

## flame\* 7.0 Troubleshooting Charts

*Determining the problem*

*This document contains troubleshooting flowcharts for your flame\* 7.0 system. Read this document if you encounter problems with flame\* 7.0 before contacting customer support.*

As well, you should read this in conjunction with the following documentation:

- *flame 7.0 Installation Guide*
- *flame 7.0 User's Guide*
- *Discreet Audio Hardware Configuration Guide*
- *Octane Workstation Owner's Guide*

### Getting More Help

If you run through these flow charts and still have not corrected your problem, contact Discreet Logic Customer Support at one of the numbers below. You can also send queries by email.

#### **Discreet Logic Customer Support**

North America: (800) 92LOGIC

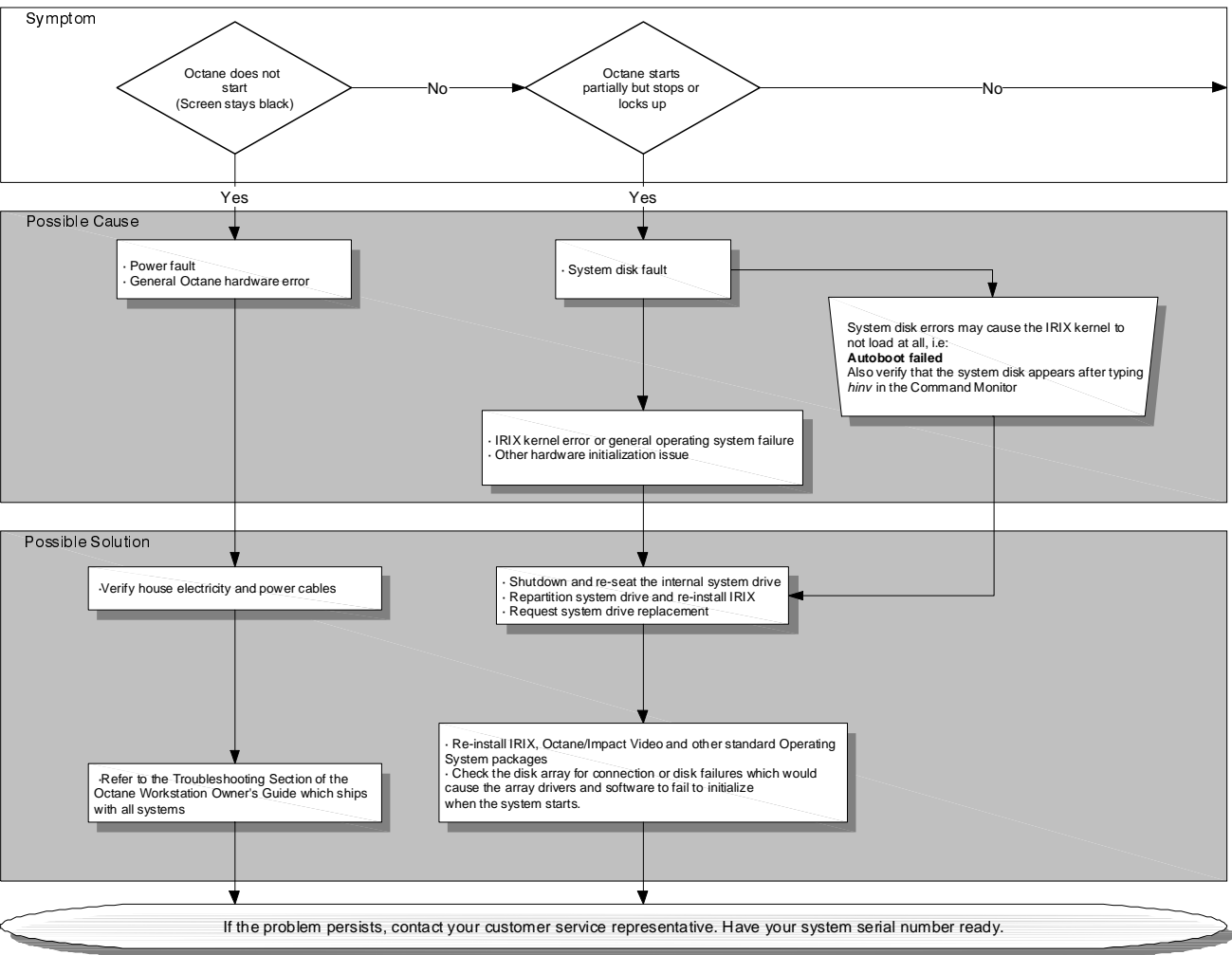
Elsewhere: (514) 393-1616

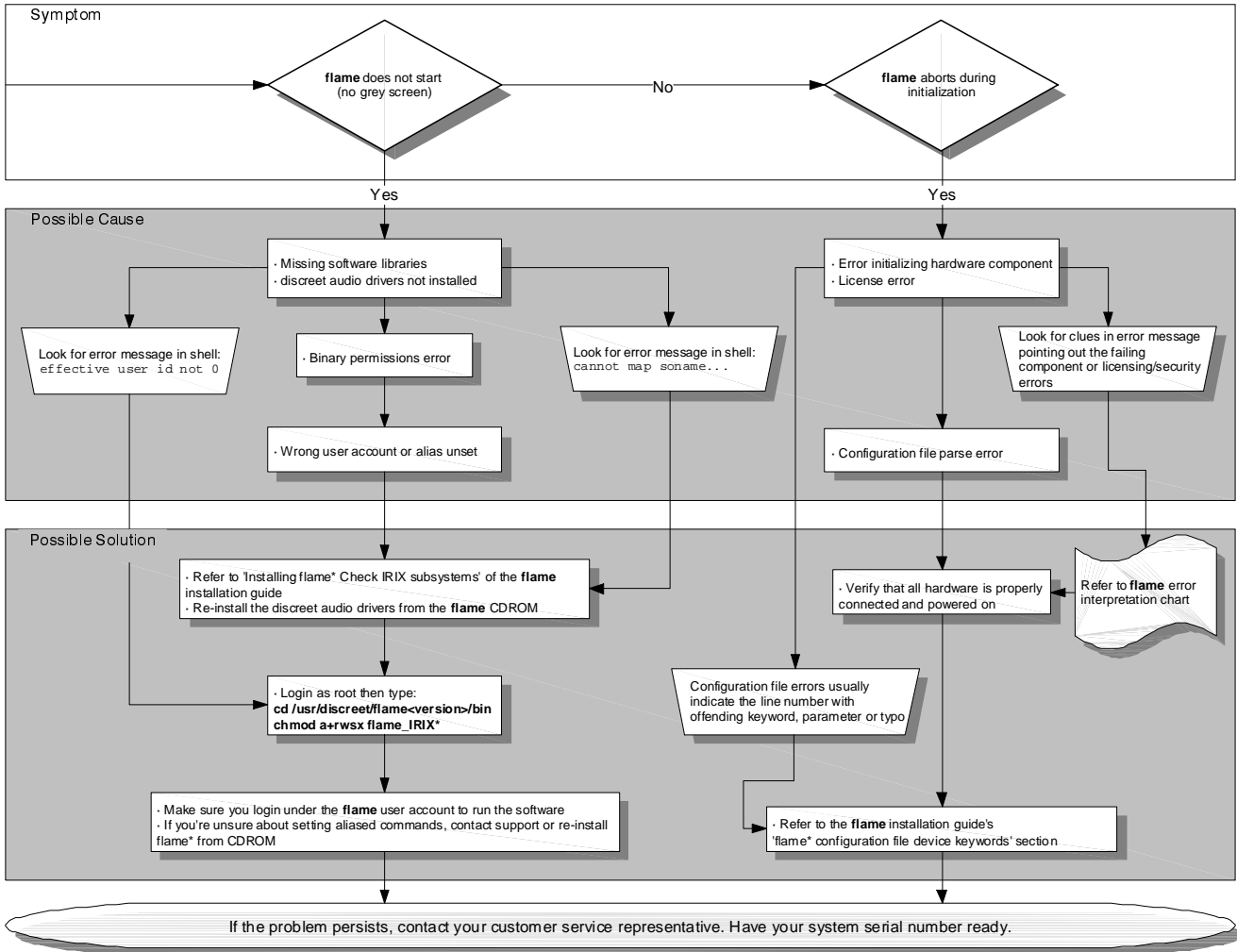
Email: [discreet.support@autodesk.com](mailto:discreet.support@autodesk.com)

Fax: (514) 954-7254

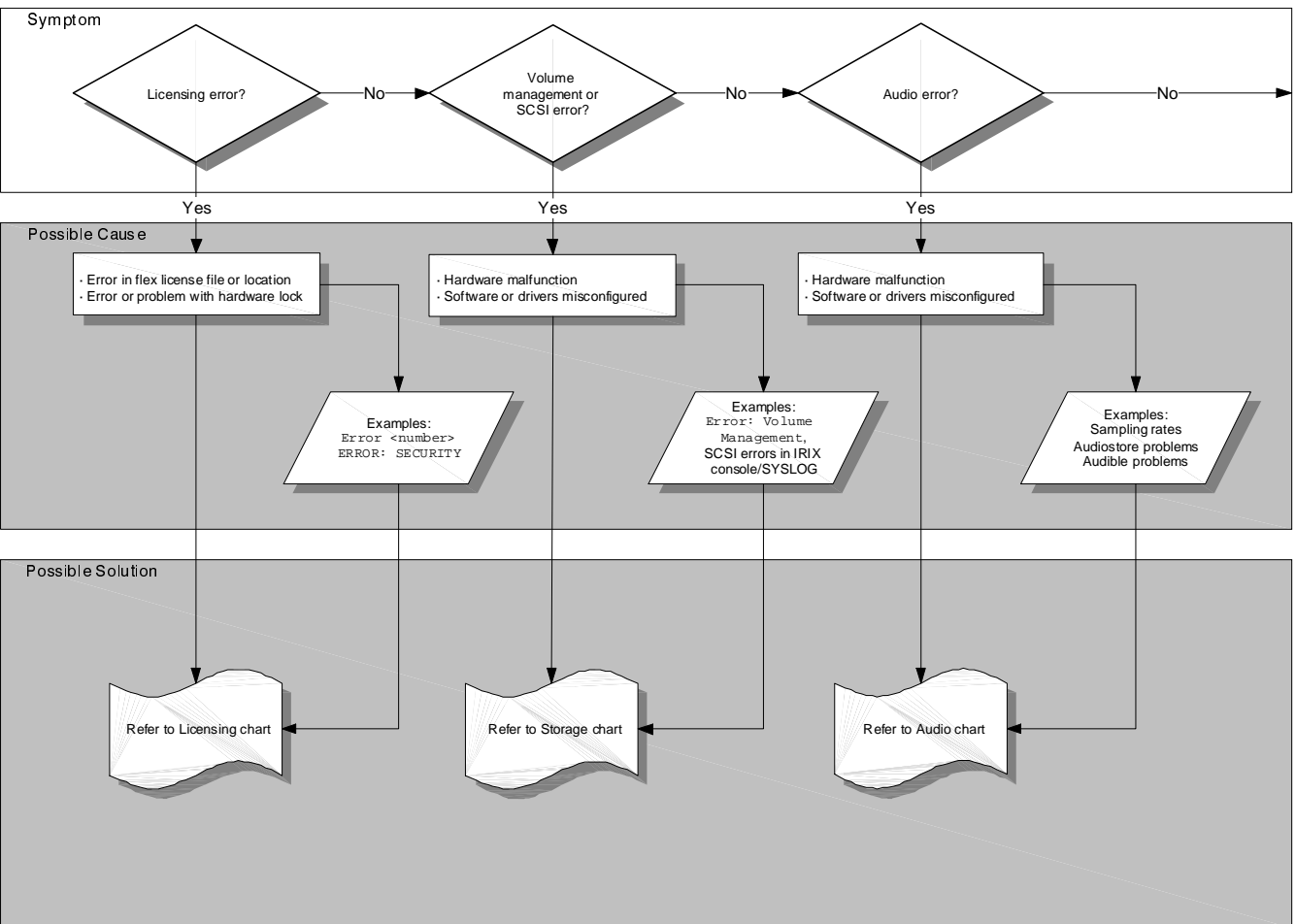
WWW: <http://www.discreet.com>

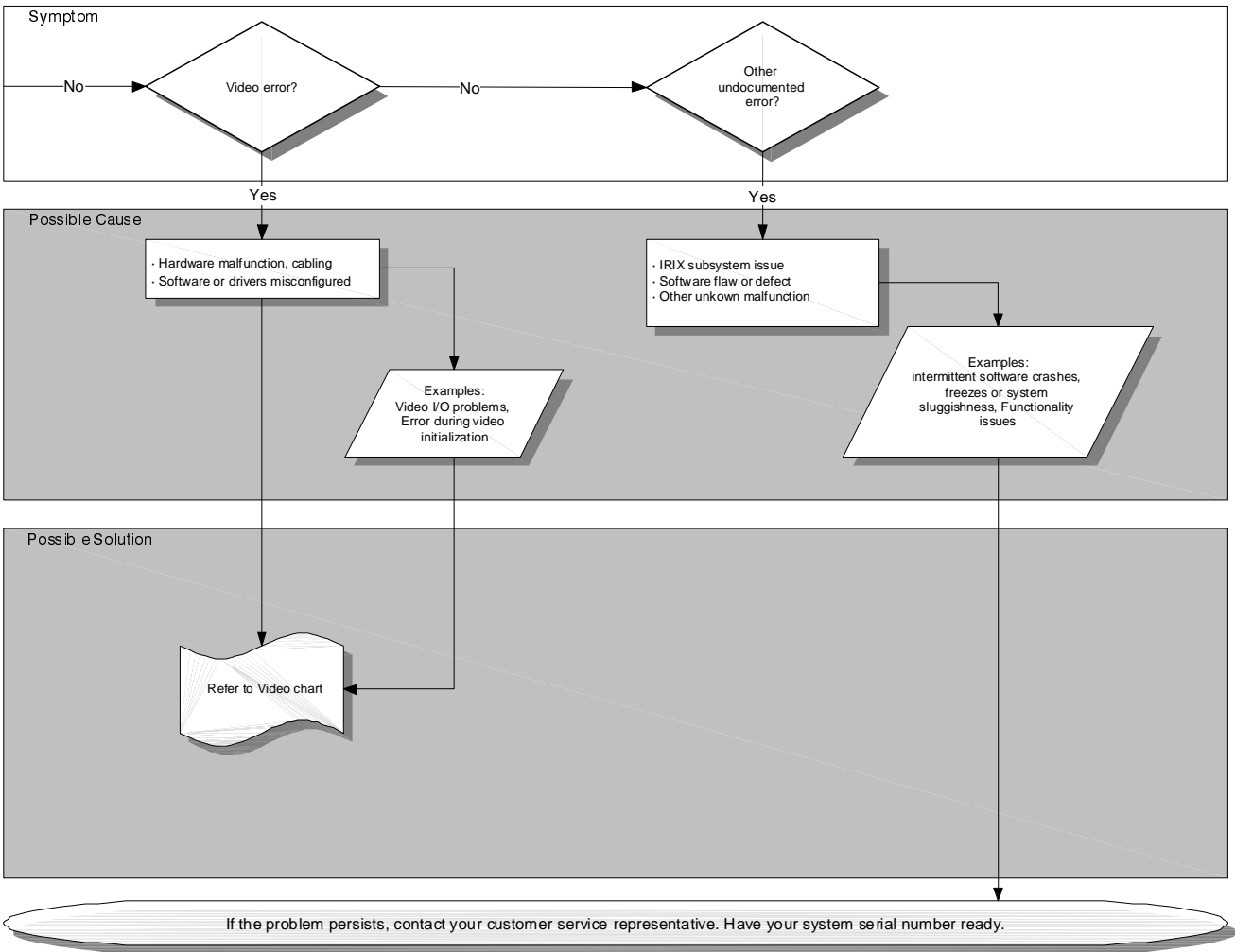
## General Charts



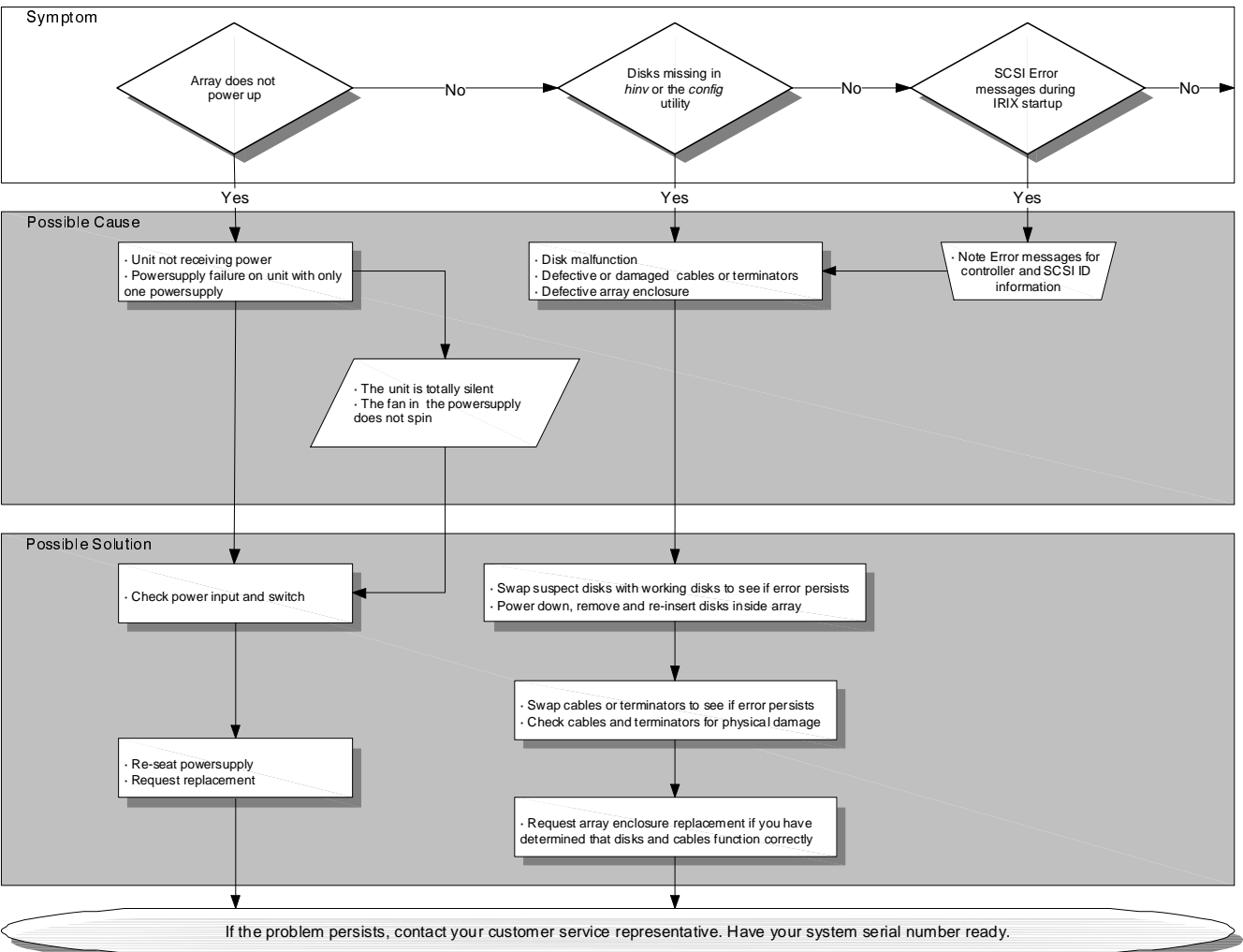


## Start-up Charts

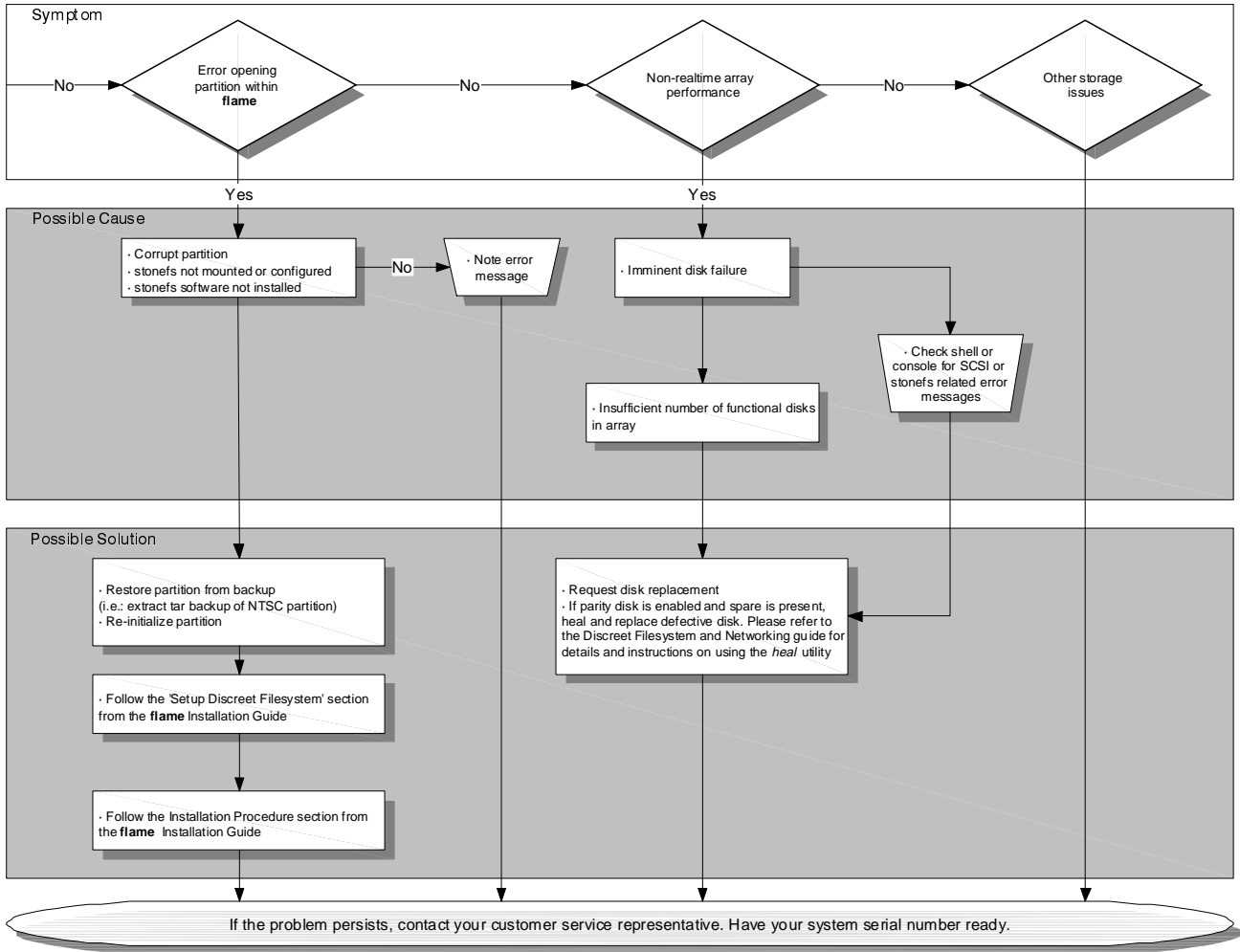




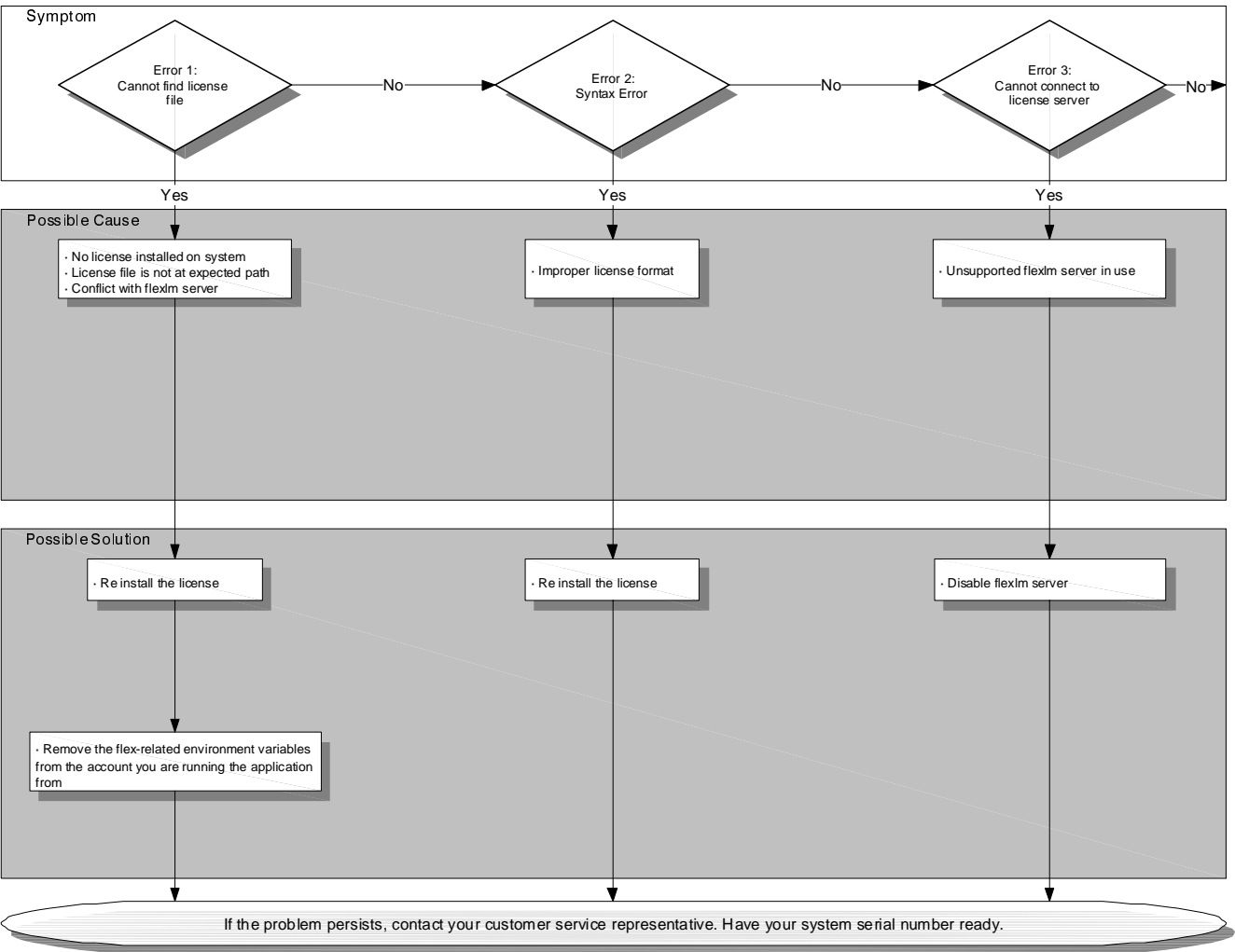
## Discreet Storage Charts

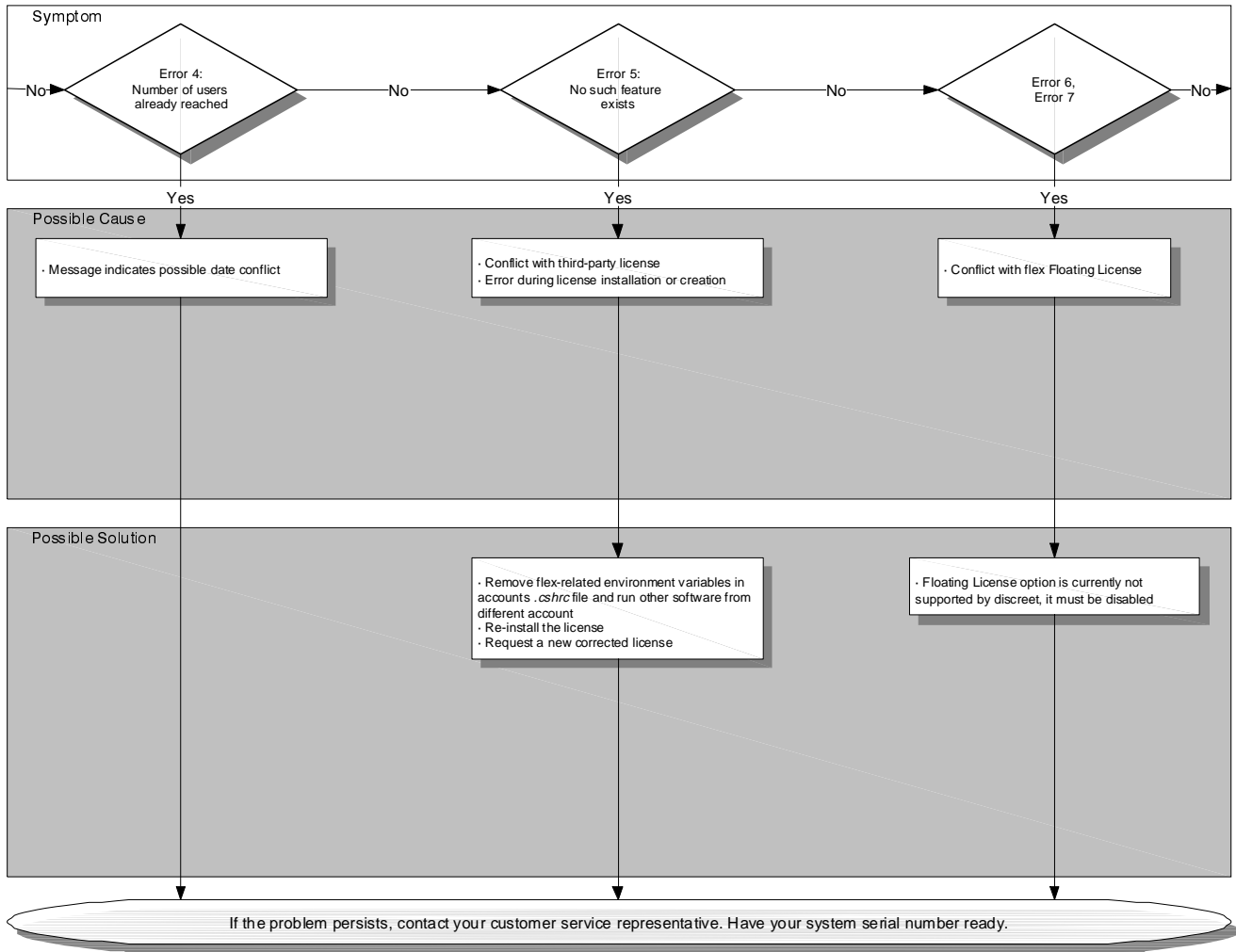


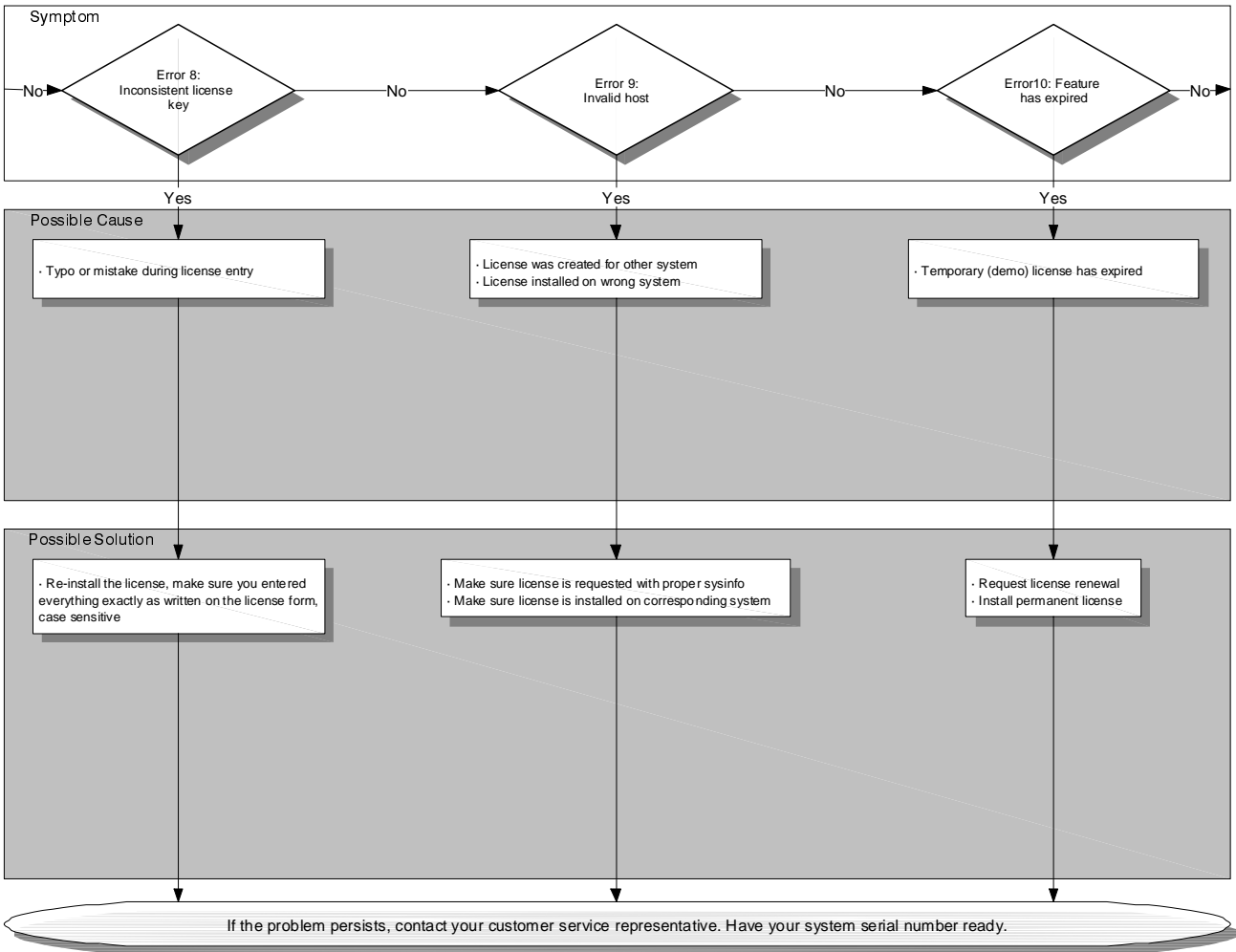


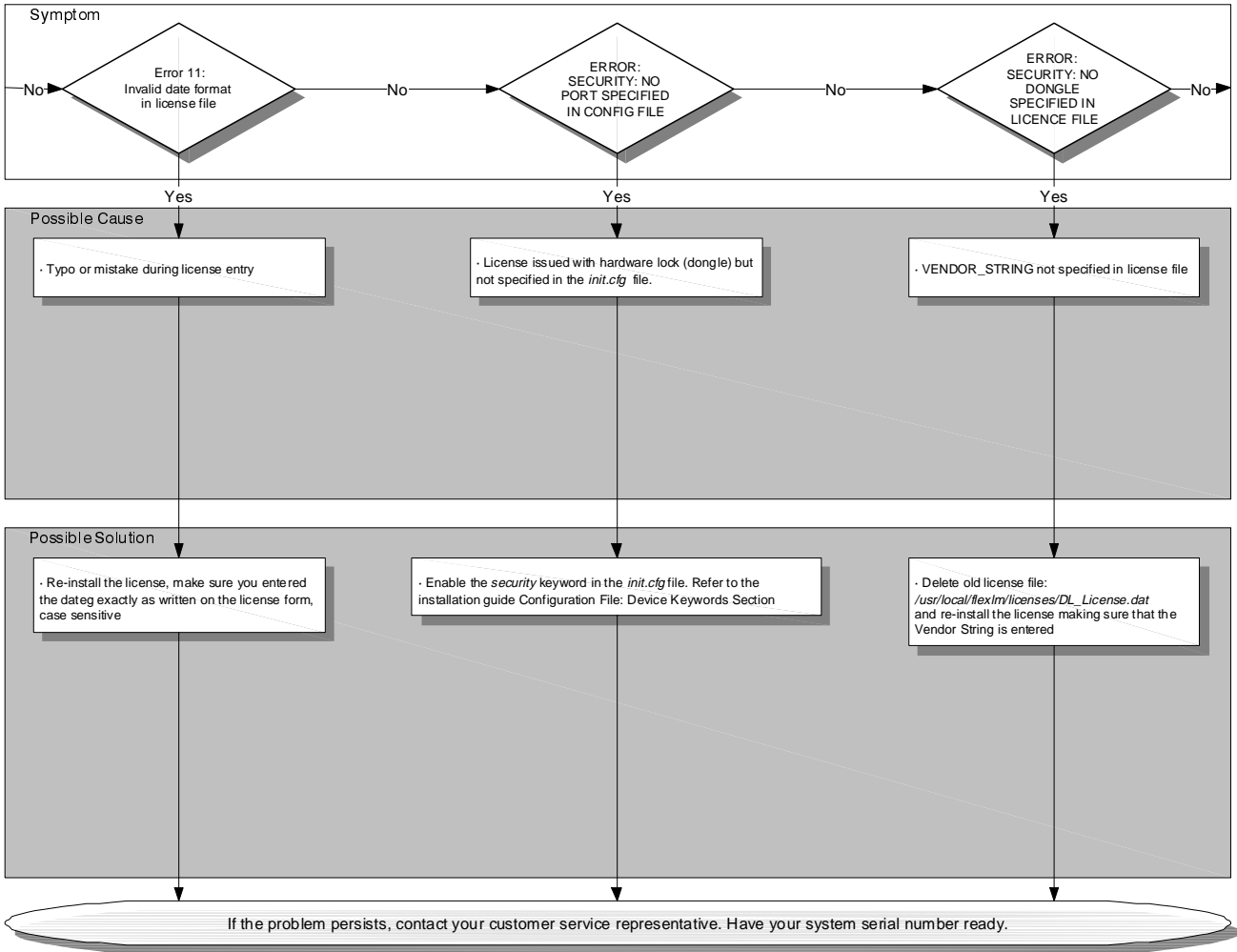


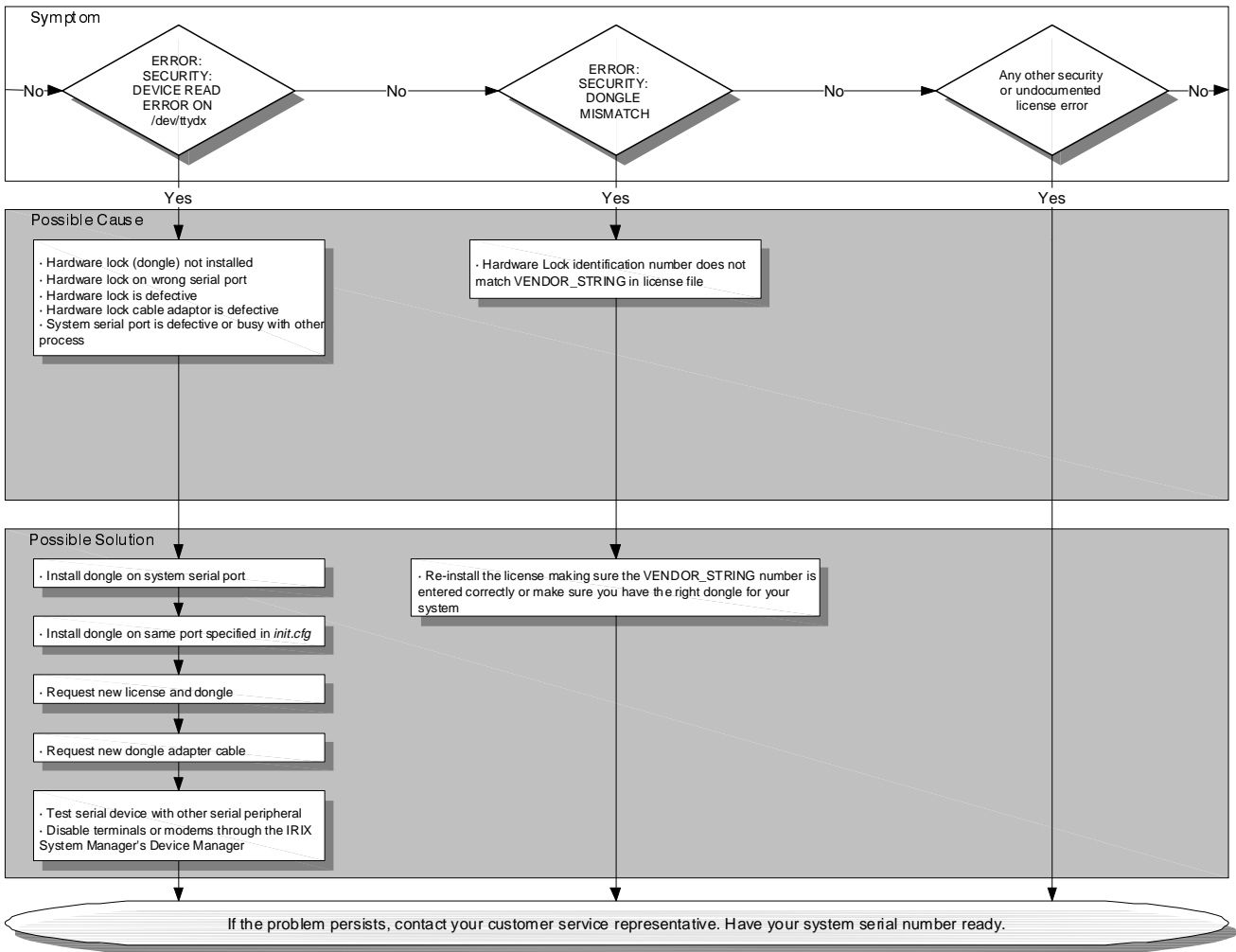
## License Charts



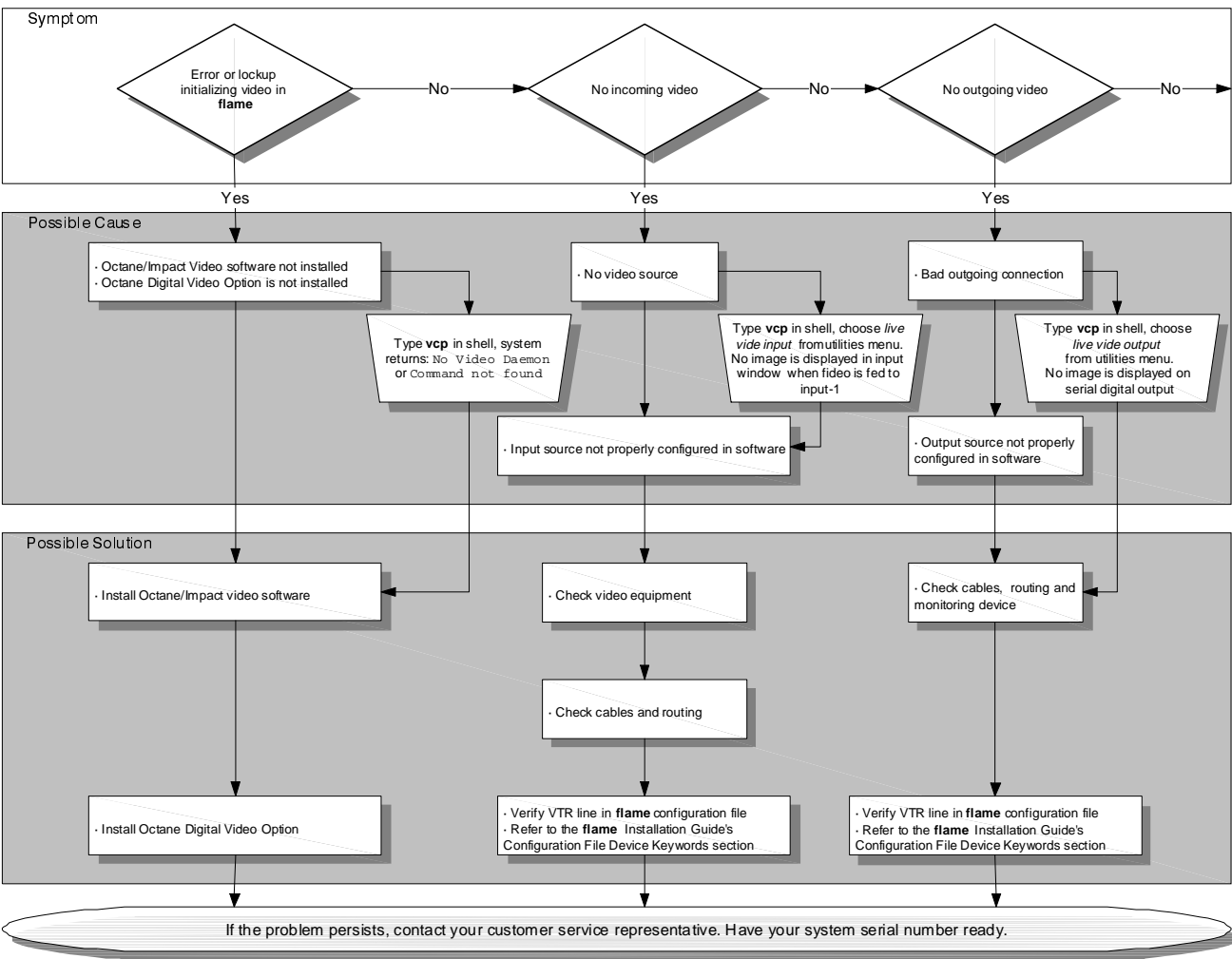


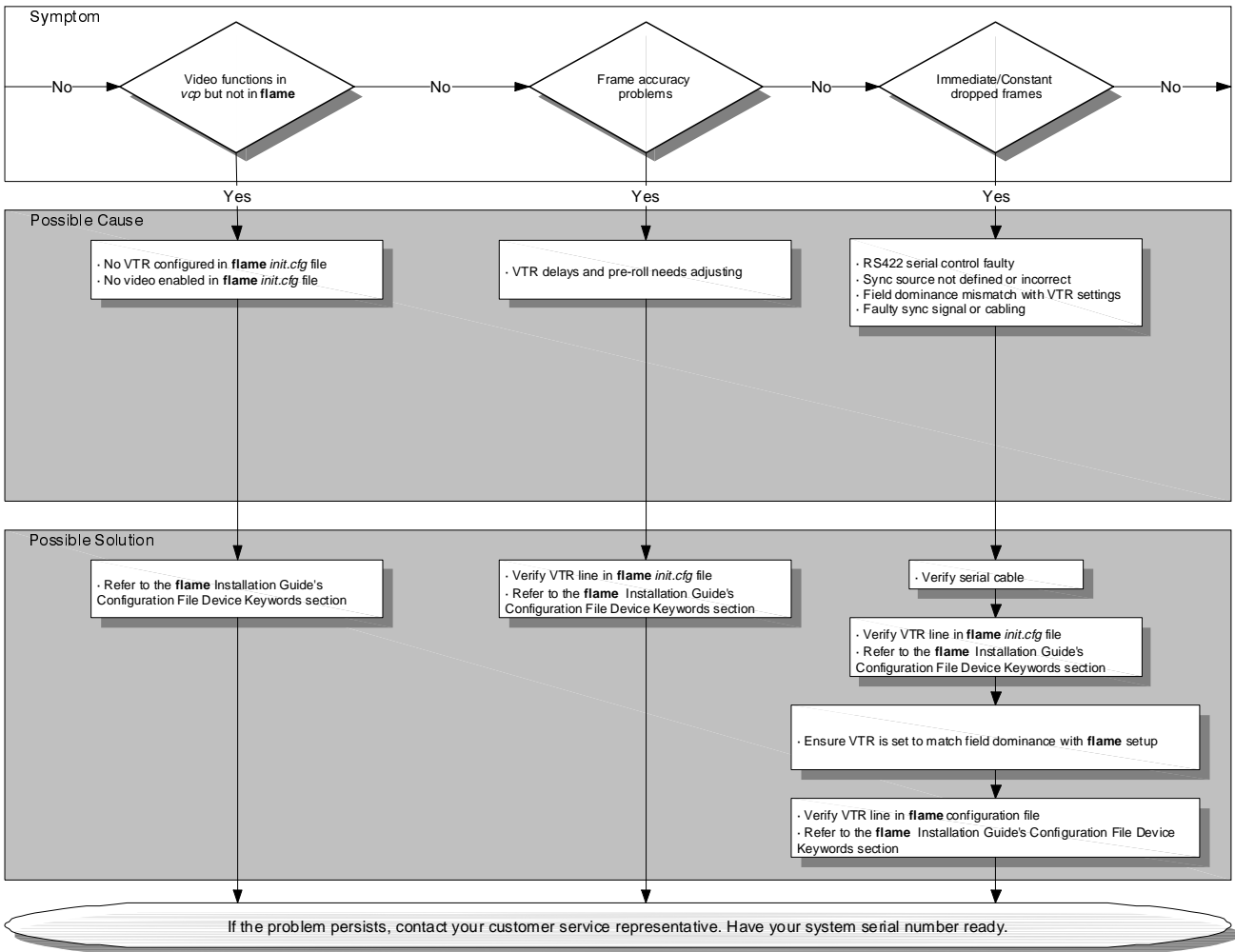




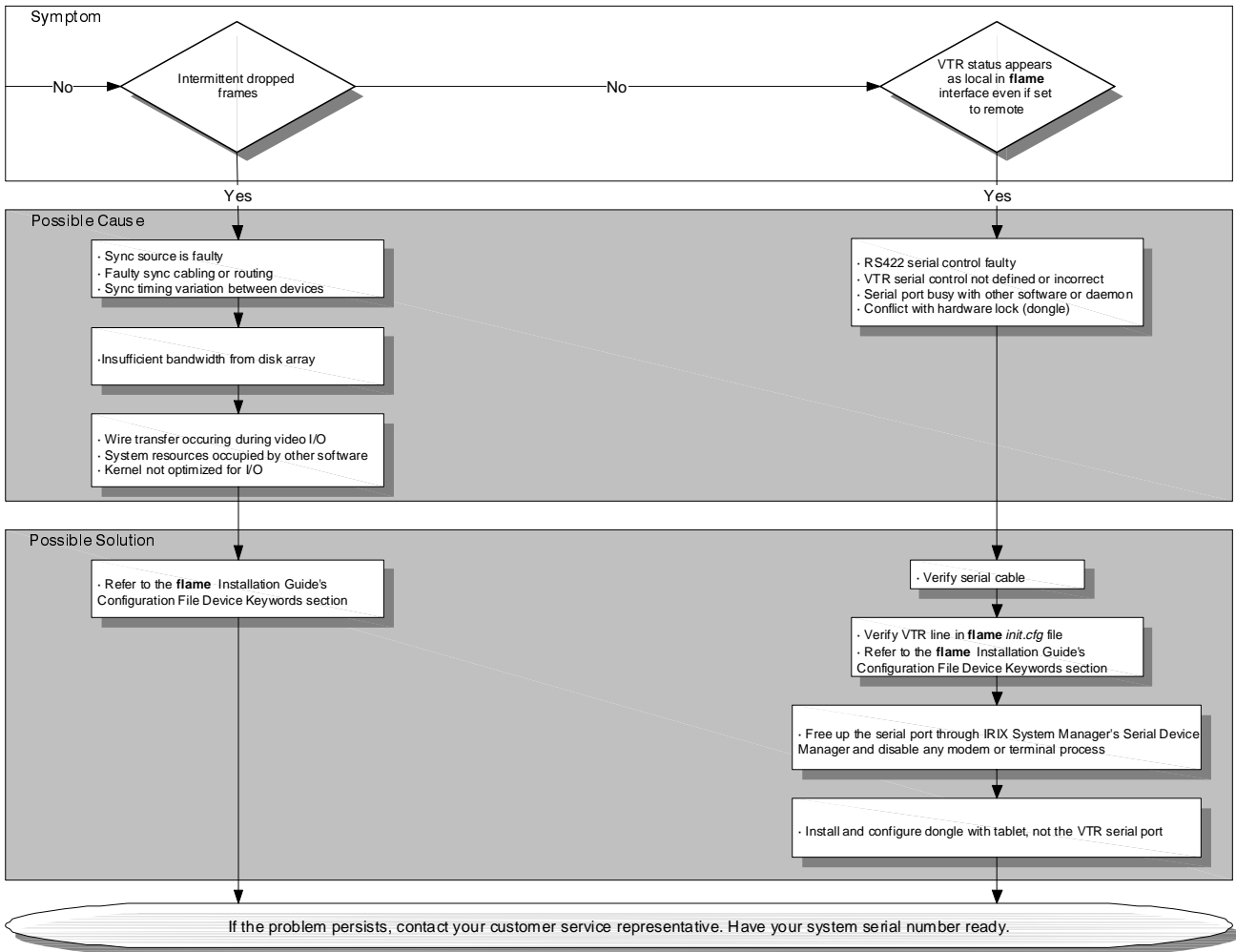


# Video Charts

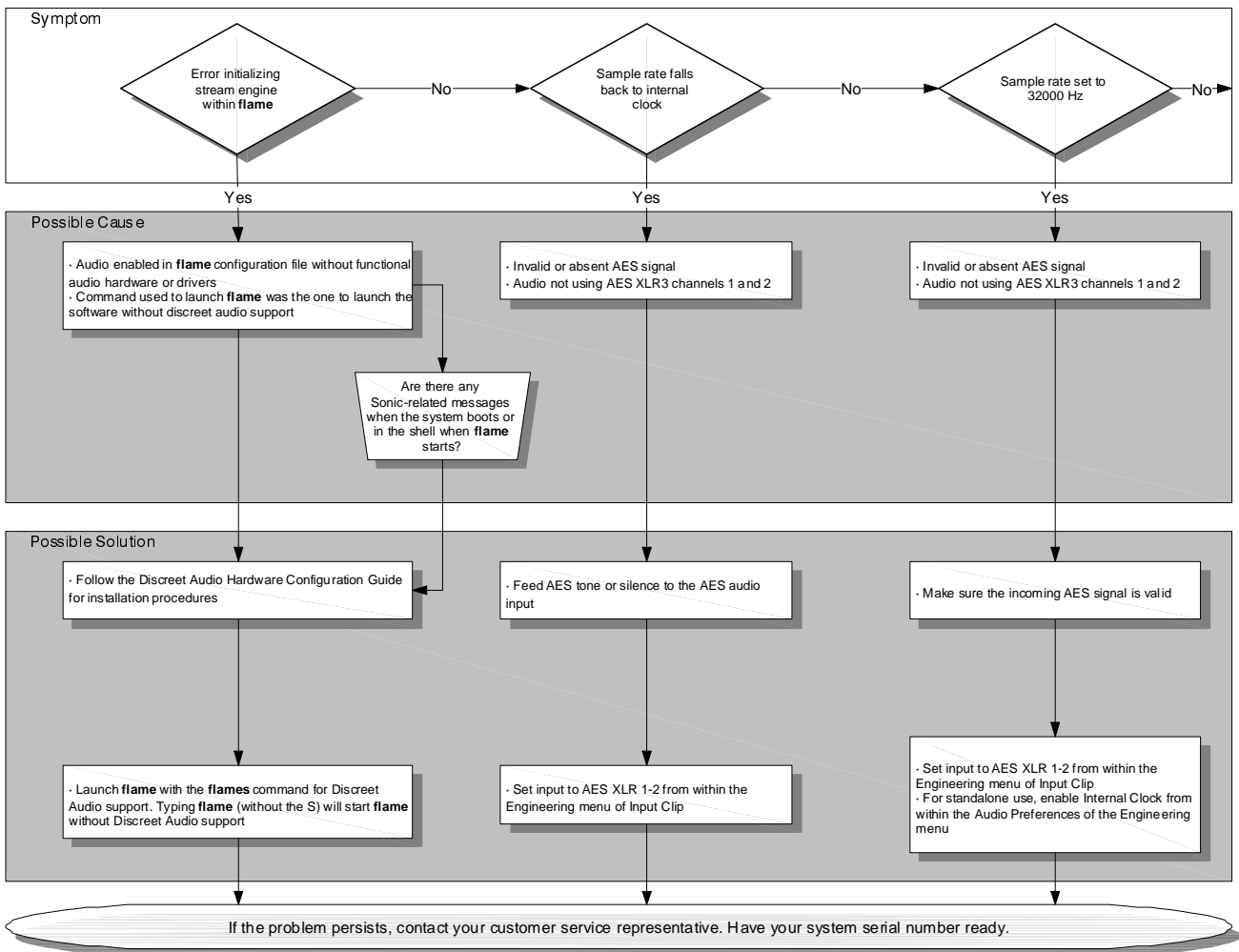


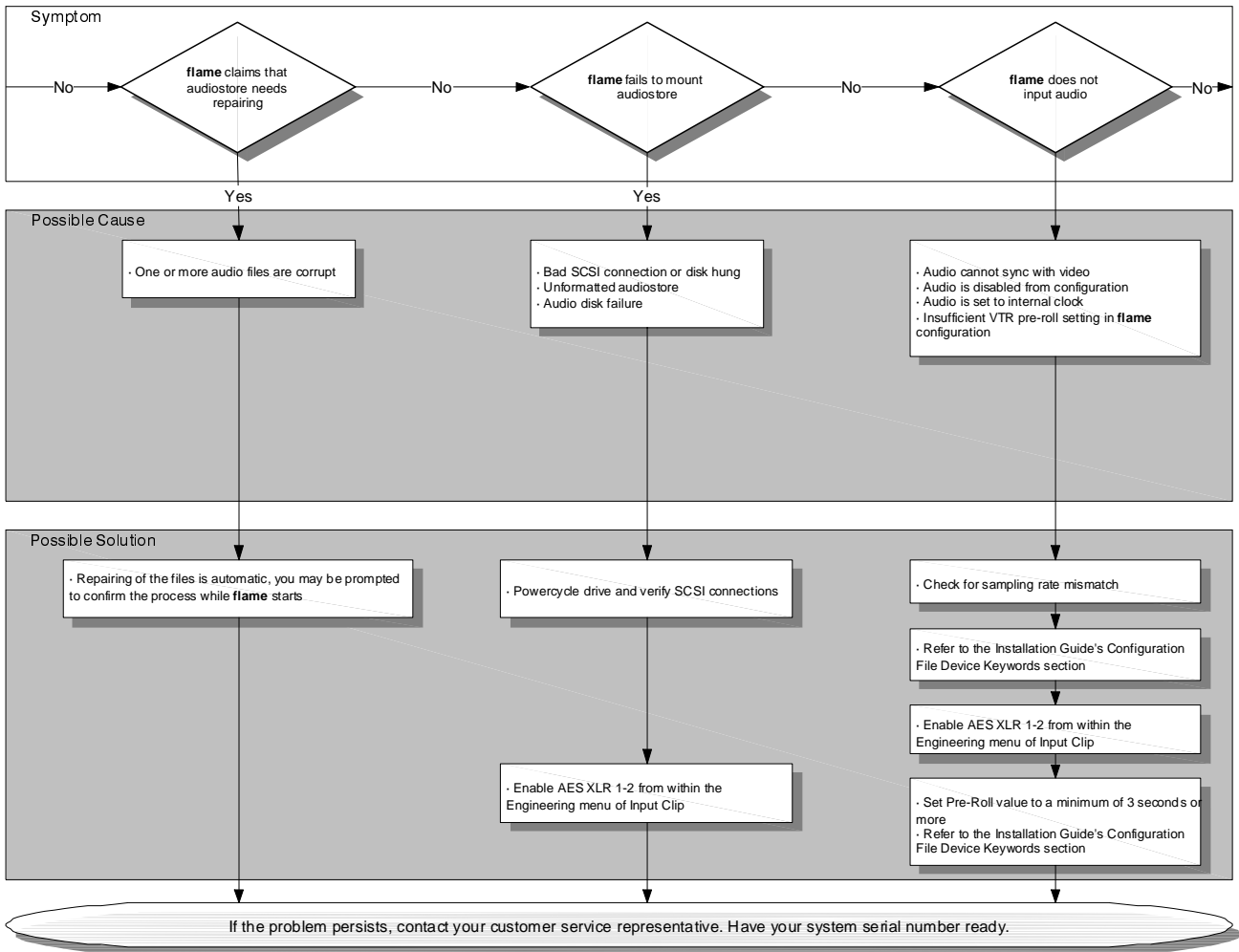


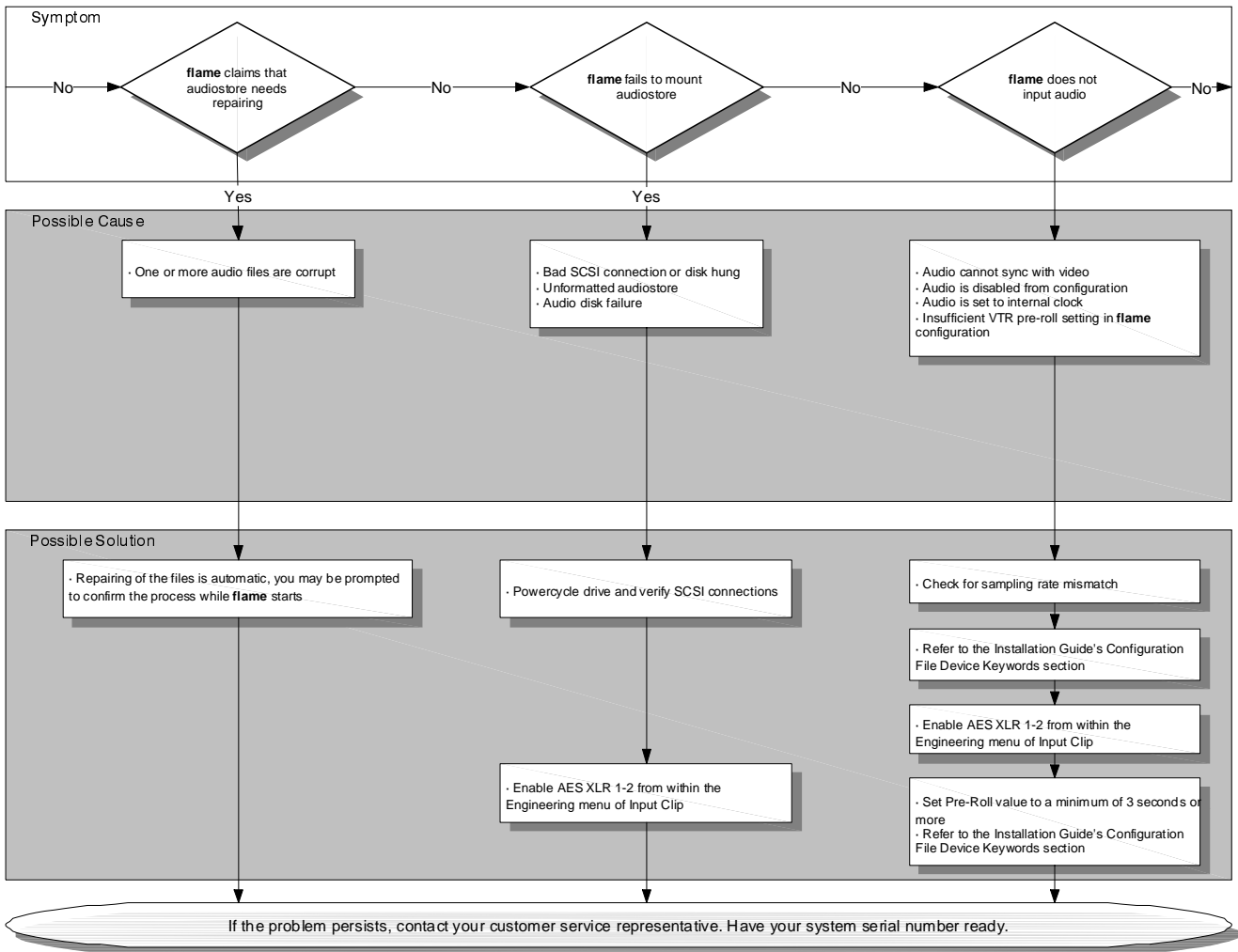


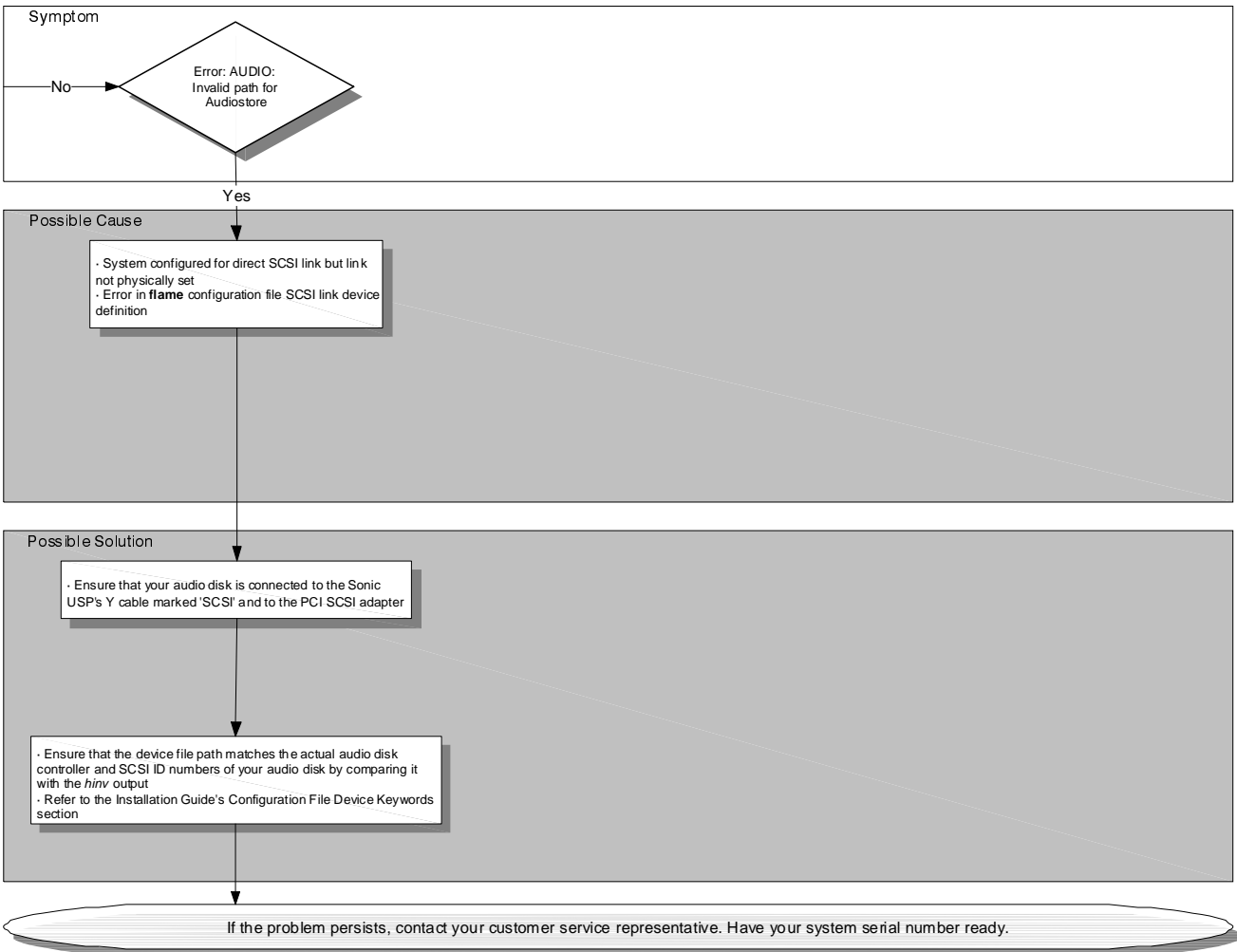


## Discreet Audio Charts

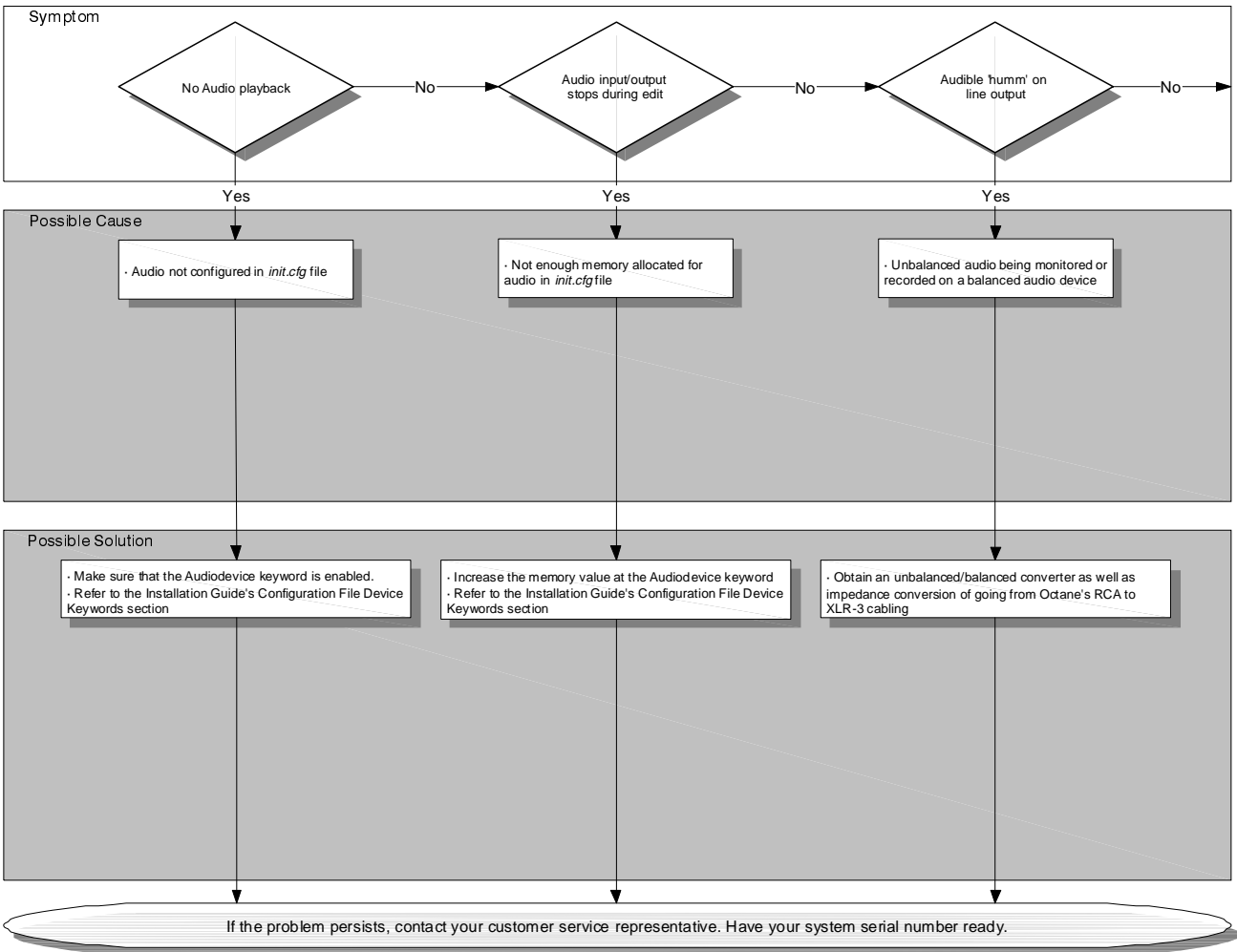


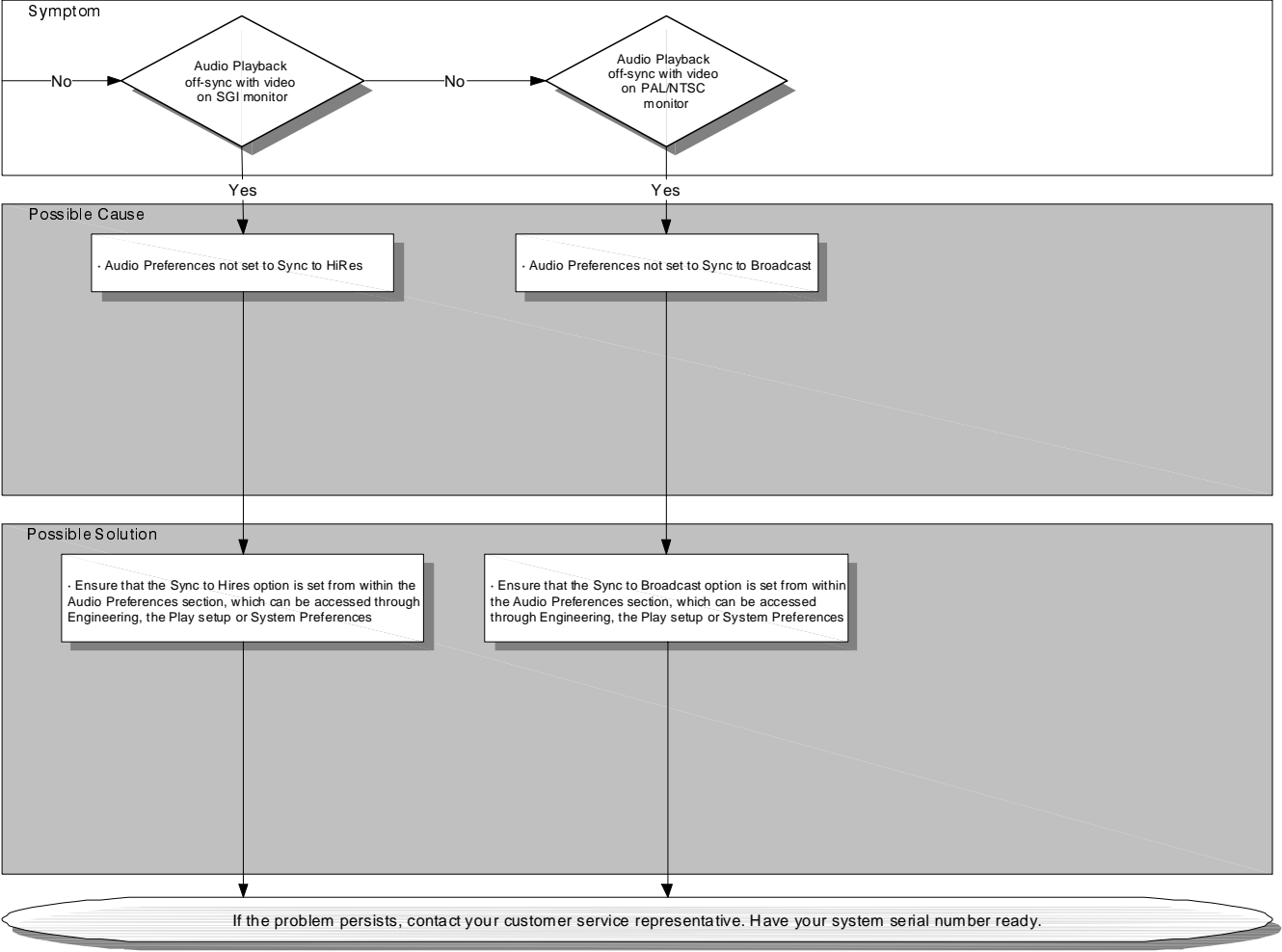






## SGL Audio





\*from discreet logic





# Acknowledgments

---

## **User's Guide Team:**

**Written and illustrated by:**

Nick Conein

**Edited by:**

Jeremy Kerr

**Layout design by :**

Brenda Barrie, Nick Conein

